

B - PB - 3ª

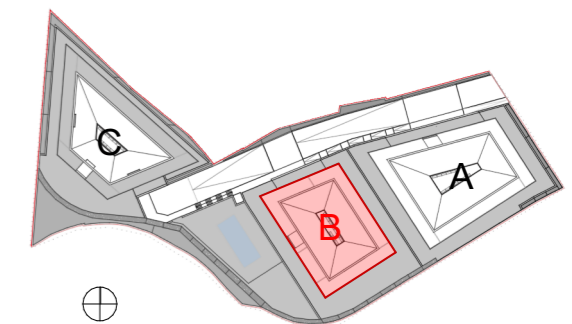
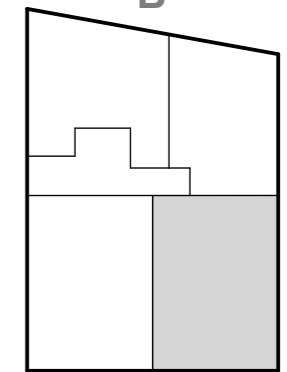
Resumen Sup. Útiles

Sup. Útil Interior	78,49	m ²
Sup. Útil Exterior	90,58	m ²
TOTAL	169,07	m²

Resumen Sup. Construidas

Sup. Construida Interior	91,05	m ²
Sup. Construida Exterior	93,46	m ²
TOTAL con Espacio Común	193,56	m²

B



 DOCA HABITAT

