

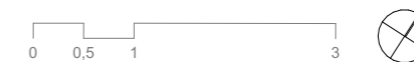
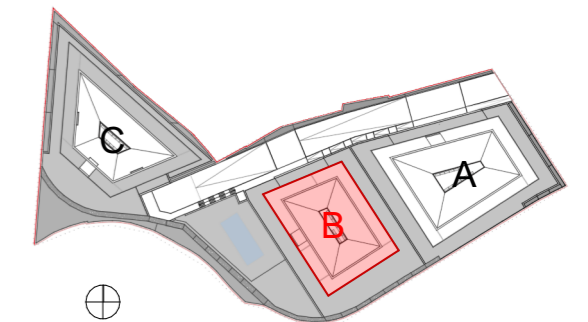
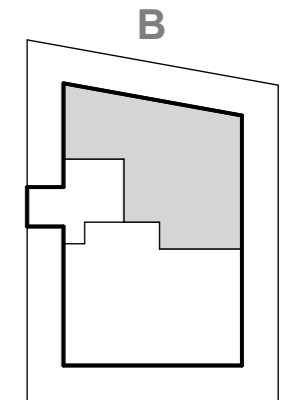
B - P2 - 1^a

Resumen Sup. Útiles

Sup. Útil Interior	72,32	m ²
Sup. Útil Exterior	72,17	m ²
TOTAL	144,49	m²

Resumen Sup. Construidas

Sup. Construida Interior	85,35	m ²
Sup. Construida Exterior	81,06	m ²
TOTAL con Espacio Común	175,46	m²



 DOCA HABITAT