

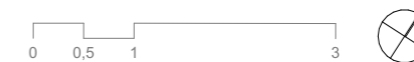
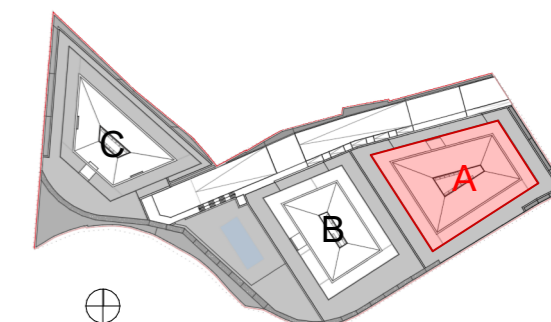
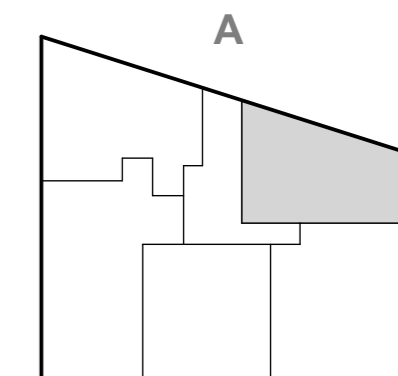
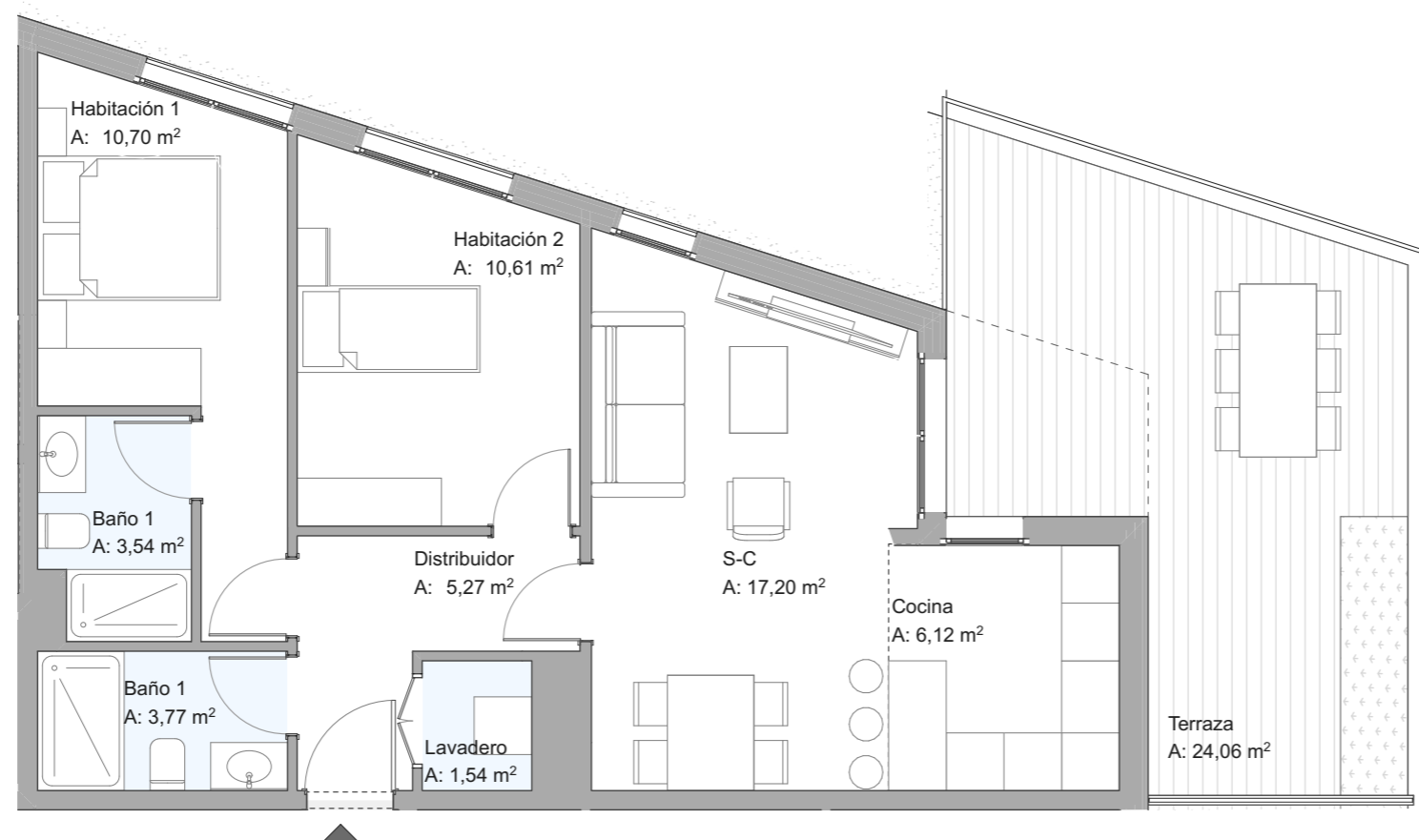
A - PB - 5^a

Resumen Sup. Útiles

Sup. Útil Interior	58,75	m ²
Sup. Útil Exterior	24,06	m ²
TOTAL	82,81	m²

Resumen Sup. Construidas

Sup. Construida Interior	69,42	m ²
Sup. Construida Exterior	27,54	m ²
TOTAL con Espacio Común	105,10	m²



 DOCA HABITAT